



α811

RFID Smart Reader

Android 6.0.1 Octa core 2.0GHz
Memory LPDDR3 2GB RAM, eMMC 32GB Internal Memory
RFID UHF 900MHz GEN2 (ISO 18000-6C)
NFC 13.56Mhz – ISO14443 A/B
2D Imager Barcode Scanner (SE-4710)
WLAN (IEEE 802.11 ac/a/b/g/n)

Bluetooth V4.1+EDR
GSM, GPRS, EDGE, UMTS, HSDPA+
GPS (Internal Antenna)
8 MegaPixel Camera Auto Focus with Flash
3.4mA RTC Source
Battery 6800mA rechargeable

α811 Smart RFID Reader



Overwhelming read range.

The linear antenna mounted on a811 allows exceptional reading performance of tag recognition up to 32 meters away. (Based on own experiments)
The reading distance, speed, and accuracy of a811 make your business more efficient and faster.

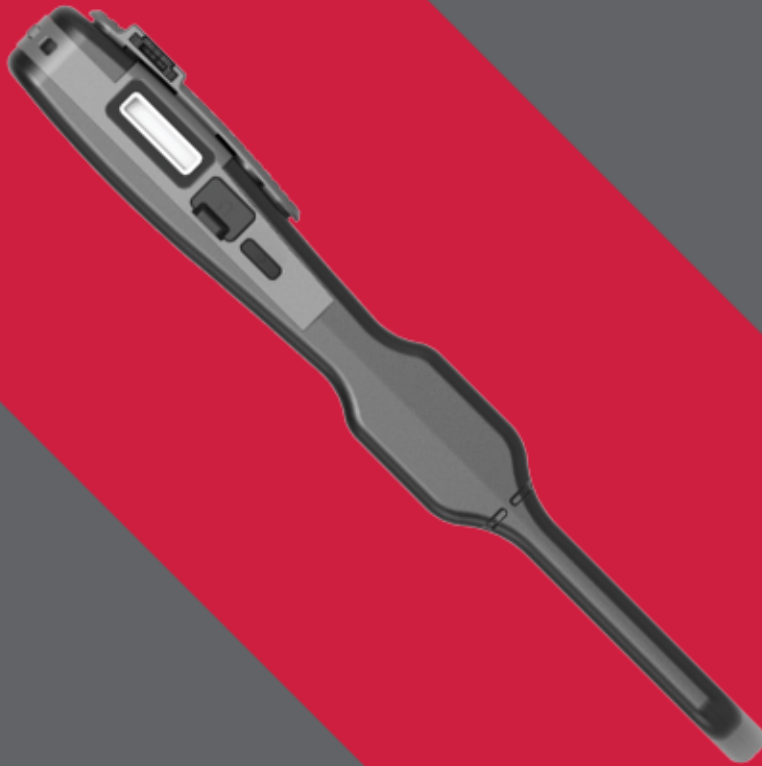
Read Distance (Open field)

Tag Type	FCC	CE
Confidex	29.5 m	30.5 m
Alien	16.7 m	13 m
UPM	15.9 m	14 m
Confidex(metal)	15.1 m	13.5 m
Omron	14 m	10 m
Rafsec	14 m	13.5 m

Read Speed

Tag Type	FCC/CE
Alien 2011	150-160 tags/s





The only shape designed for better UHF functionality.

a811 is designed to use linear antenna to have an ultimate reading performance and in result, it has a slim plate shape. Because of this form, the volume of the device is reduced dramatically which is not able to be compared with other products. This allows users to have a freedom of both hands which maximizes productivity.

Every solutions are integrated.

a811 functions mainly as UHF RFID reader with Wi-Fi and Bluetooth connectivity and additionally provides 2D barcode imager and NFC reader with 3G and GPS functions. With the hardware foundation and convenient development tools, your business can be connected anywhere.



α811



α811 Specification

Performance Characteristics

Processor	Octa core 2.0GHz
Operating System	Android 6.0.1
Memory	LPDDR3 2GB RAM, eMMC 32GB Internal
Display	IPS 4" WVGA TFT-LCD
Operating Temp.	-20°C ~ +70°C
Storage Temp.	-30°C ~ +80°C
Humidity	95% non-condensing
Drop test	1.5M Drop to concrete
Dust & Water Proof	IP65

Physical Characteristics

Audio	Phone Receiver, Speaker, Ear Jack, Microphone
Standard I/O Port	1 Port USB OTG
Expansion	2 Port USB Host, 1 port UART (RS-232+ Out Support 5V) / 1 Port USB Client
Notification	Vibrator and LED, Speaker
Weight	548g
Dimensions (L x W x H)	133 mm * 216 mm * 23mm

Data Capture Device

Barcode Engine	SE-4710 2D Imager Barcode Scanner
Camera	8 Mega Pixel Auto Focus with Flash

NFC Reader/Writer

Applicable RFID Tag	ISO 15693, MIFARE, ISO14443 A/B
Reading Range	Based on Tag: 0~10cm (Internal)

Network Characteristics

WLAN	IEEE 802.11 ac/a/b/g/n
Bluetooth	Bluetooth V4.1+EDR
Radio	GSM, GPRS, EDGE, UMTS, HSDPA+
GPS	internal Antenna

UHF Reader/Writer

Frequency	860MHz ~ 960MHz
Reading range	0M ~ 40M (Depending to Tag & Environment)
Writing range	0M ~ 10M (Depending to Tag & Environment)
RF output	1W ~ 4W EIRP
Protocol	Gen2, ISO / IEC 18000-6C
Special function	Anti-Collision

Power Supply

Main Battery	6800 mA (Rechargeable)
Backup Battery	3.4 mA RTC source
Power Adapter	5V 2A Micro USB Adapter

Accessories

Cradle	USB Host, Ethernet, UART (RS-232 with 3.3V & 5V Power Supply), USB Client, Battery Charger
Leather Case	Optional
Hand Strap	Yes

Cradle / Cradle Plus⁺

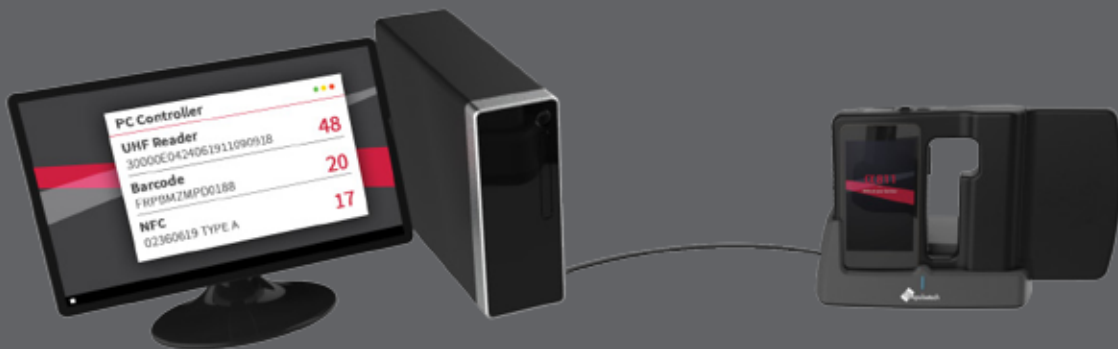


Cradle / Cradle Plus⁺ Specification

Physical Characteristics

Spare battery charger (LED indicator)
 Ethernet connector (10M Type RJ45)
 USB charging (Type Micro B)

USB 2.0 Client (Type Micro B)
 USB 2.0 Host (Type A)
 UART (RS-232 with 3.3V & 5V Power Supply)



Cradle Plus⁺

Introduction

Alpha 811 provides Cradle+ for users who need both RFID Handheld and USB readers. Users are able to implement their application on PC easily thru supported MS / Android SDK service. No need to purchase and maintain separate device. With Cradle+ option, Alpha 811 can be handheld reader in your hand and PC reader station thru various connectivity.

Accessories



Cradle



Leather Case



Handstrap



USB Charger



USB Cable

















Elements of α811 system and related product design are patented or patent pending, both in Korea and internationally.

Elements of α 811 system and related product design are patented
or patent pending, both in Korea and internationally.

 KCC CE FC CCC RoHS

 Android UHF RFID NFC WiFi Bluetooth 3G GPS Camera



Address : 26 Jong St., Waterford, Ontario, Canada Postal Code: N0E 1Y0
Tel: +1 289.812.1006 | Email: Sales@skyrfid.com | Website: skyrfid.com

Made In Korea